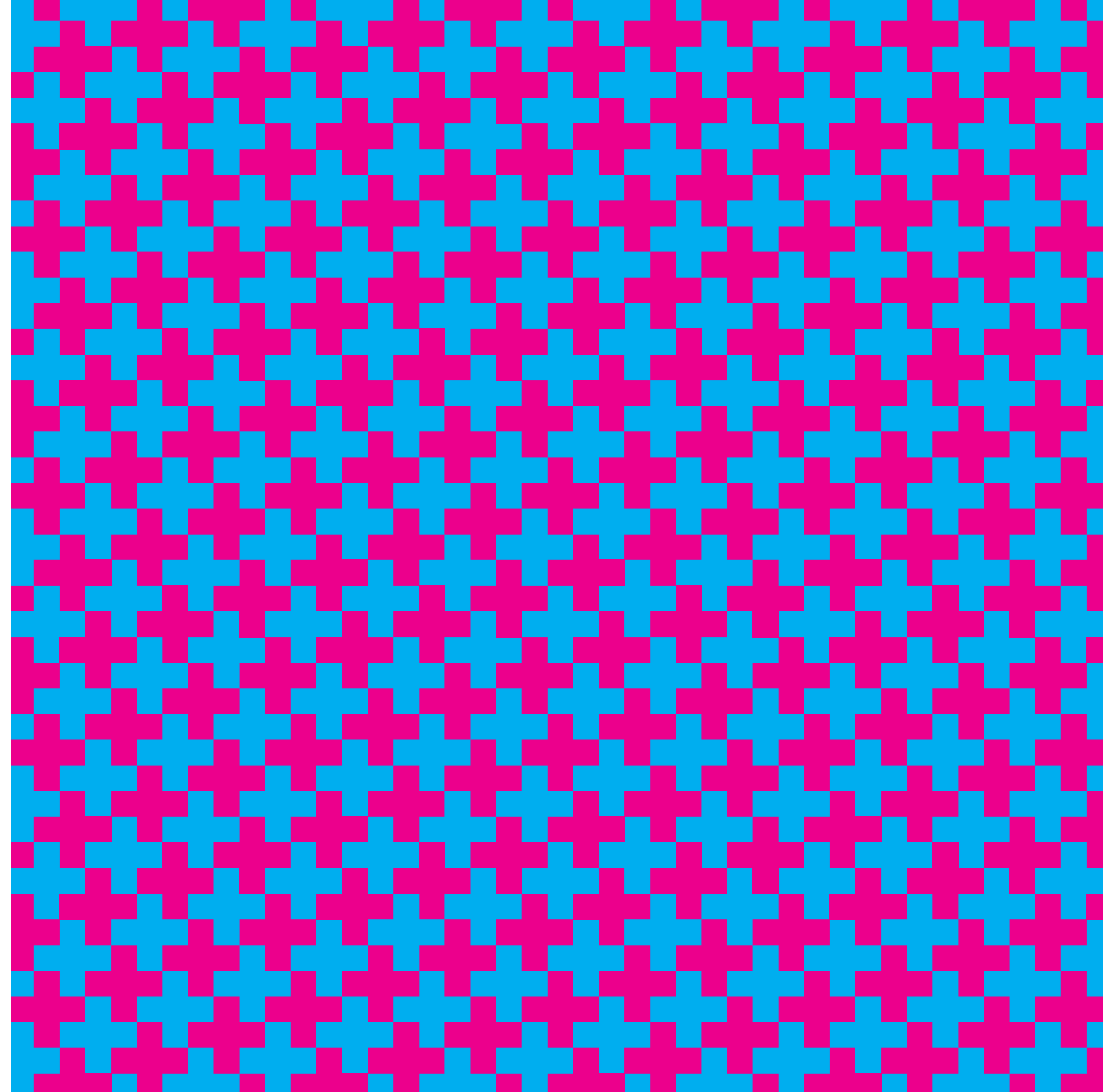


DREAM
BIG
DESIGN
HARD

MARK
GOLD
BRAND





It all starts with a Plus⁺



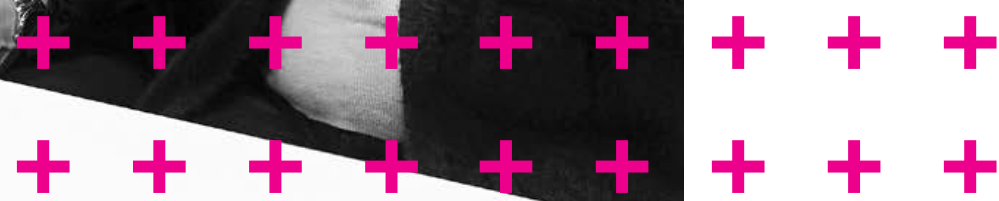
D+ TEAM

**Beauty
shouldn't be
expensive.
Functionality
shouldn't be
boring.**

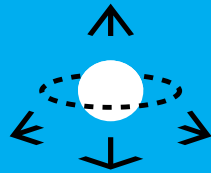
Design Plus is first and foremost the efficient combination of creative, technical, commercial and project management profiles, experts in workspace fit-out and renovation in Belgium.

We are passionate and set high expectations for ourselves. We are convinced that creativity and functionality can and must be combined to create memorable and efficient workspaces.

Today, we complete this challenge every day.



OUR SERVICES



CHANGE MANAGEMENT

WE HELP YOU DEFINE YOUR VISION AND PREPARE YOUR TEAMS TO MOVE INTO THEIR NEW WORKSPACES WITH ENVY.

We design and execute for you a progressive transition plan, starting with building awareness of what's changing to effective adoption of their new offices.

Our plus: Present at the start of each project, our change manager facilitates the translation of your vision and needs into a creative concept, which accelerates the Design process.

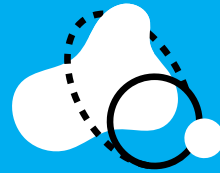


REAL ESTATE

WE HELP YOU TO FIND THE SPACE AND/OR LOCATION TAILORED TO YOUR NEEDS.

We support you in the real estate search procedure, tenant representation, lease negotiations and relocation procedures. We consider ongoing mobility evolutions and execute due diligence process.

Our plus: More than 15 years of experience and a solid knowledge of the belgian real estate market.



DESIGN

WE CREATE MEMORABLE SPACES THAT RESEMBLE WHO YOU ARE AND ENABLE YOUR TEAMS AND BUSINESS.

Whether we are fitting-out a new or an existing space, our internal team of interior designers and engineers work hand in hand to combine technical quality, interior aesthetics and new technologies.

Our plus: Whether you call it New World of Work, Smart Working or other... We place user-experience at the forefront of the spaces we create.

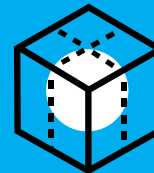


BUILD

WE EXECUTE AND COORDINATE THE ENTIRE WORKS, IN THE AGREED TIME AND BUDGET.

From structural works to doorhandles, we execute your project from A to Z. Technical innovations, new technologies, domotics and furniture... We coordinate all the trades required for your project.

Our plus: A single point of contact keeps you informed of the fit-out process for each step and each trade involved.

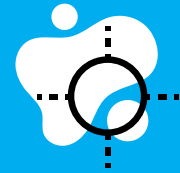


MOVE

WE DESIGN AND MANAGE THE FULL SCENARIO FOR YOUR MOVE AND HELP YOU EXECUTE IT.

We organise all coordination meetings with your project team and external stakeholders. We prepare and communicate all actions before and after your move.

Our plus: We are not afraid of details! We organise and follow for you the inventory of objects and documents to move, and centralise all documents required by the operation (travel list, move memo, departure and arrival plans).



EXIT

WE HANDLE YOUR EXIT PROCEDURE AND HELP YOU RESTORE SPACES YOU ARE LEAVING.

We take care of the exit procedure when you move into your new premises. We make a full check-up of the offices you leave and propose a re-establishment programme. We take care of restoring the previous premises at the agreed-upon-level.

Our plus: We know that managing a move does not end on the moving date. To take care of your old premises and ensure your full satisfaction once you have moved into your new offices is therefore an integral part of our service offering.



Our multidisciplinary team is by your side starting from your real estate search through to your teams moving into your new, ready to use spaces, including the refurbishment of your previous spaces if you have changed location. We then stay in touch to guarantee your full satisfaction post-move.

Right from the start and all through our collaboration, your project is entrusted to a unique point of contact in the team, who works hand in hand with our experts in Real Estate, Architecture, Engineering, Interior Design, Construction and Change Management.

Your project is managed seamlessly, more flexibly and more economically, with your vision preserved at every step.

**With our Design & Build approach,
we take care of your project from A to Z.
And beyond.**

**WE DESIGN & BUILD
BEAUTIFUL SPACES,
THAT WORK.**

We design and create beautiful workspaces, that generate memorable experiences through the smart combination of aesthetics, functionality and technology.

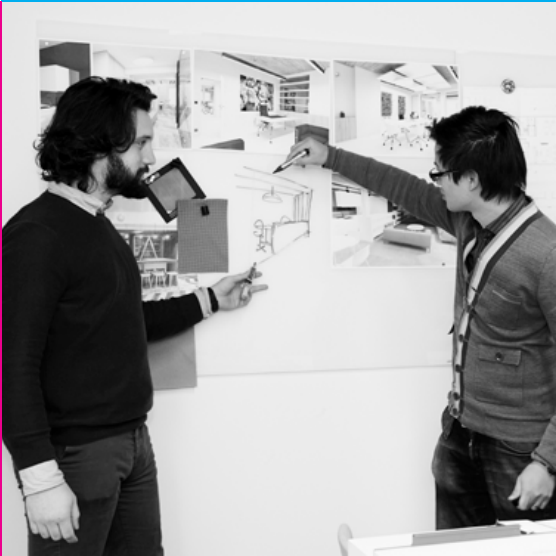
OUR VALUES

Our values direct how we work. Your satisfaction determines our credibility.



EXCELLENCE

We work with ambition and deliver quality, every time.



PASSION

We enjoy what we do and simplify our trade for our clients.

FLEXIBILITY

We anticipate the unexpected and respond with willingness



INSPIRATION

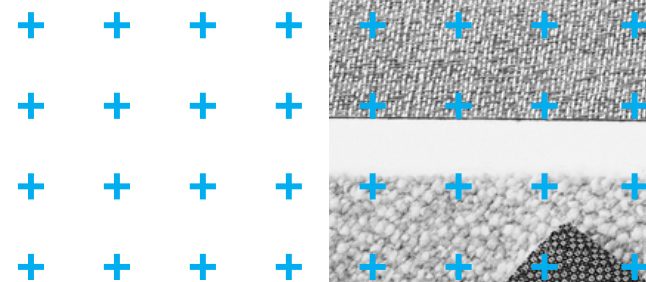
We explore off the beaten track and share our discoveries.

THE WAY WE WORK

We believe that with each project, you entrust us with a small piece of your story. For this reason, we owe each project our best ideas, our best advice and our best execution.

We listen to you first. Then we challenge you. To better inspire you. And create, with you, durable and unique spaces.

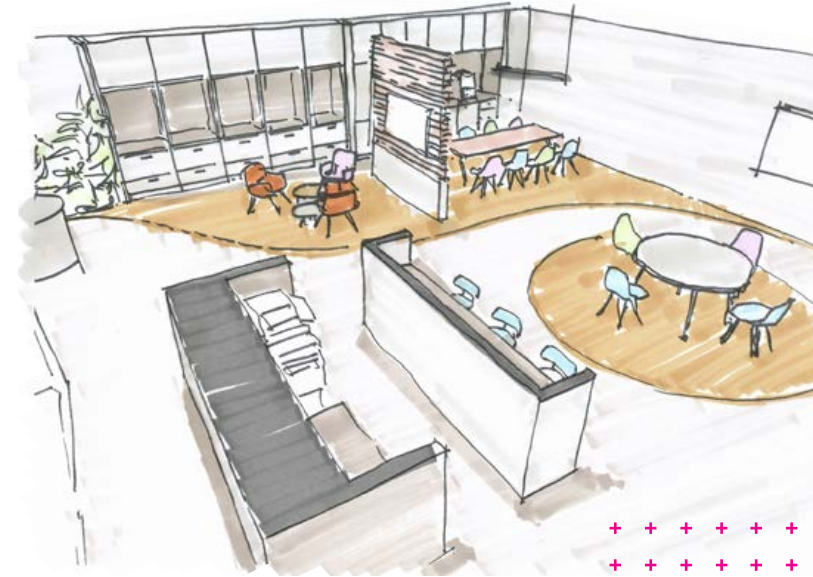
Where others see technical specifications, floorplan blueprints and carpet samples, we present solutions tailored to your business, your demography and your culture, enabling your teams' full potential.





VALIDATE THE CONCEPT

Once your vision and project expectations are decided, sketches enable us to discuss and clarify preliminary designs and intentions. We explore the general layout, optimise space efficiency, and confirm critical structural elements (walls, lights,...).



TAILOR AND CUSTOMIZE

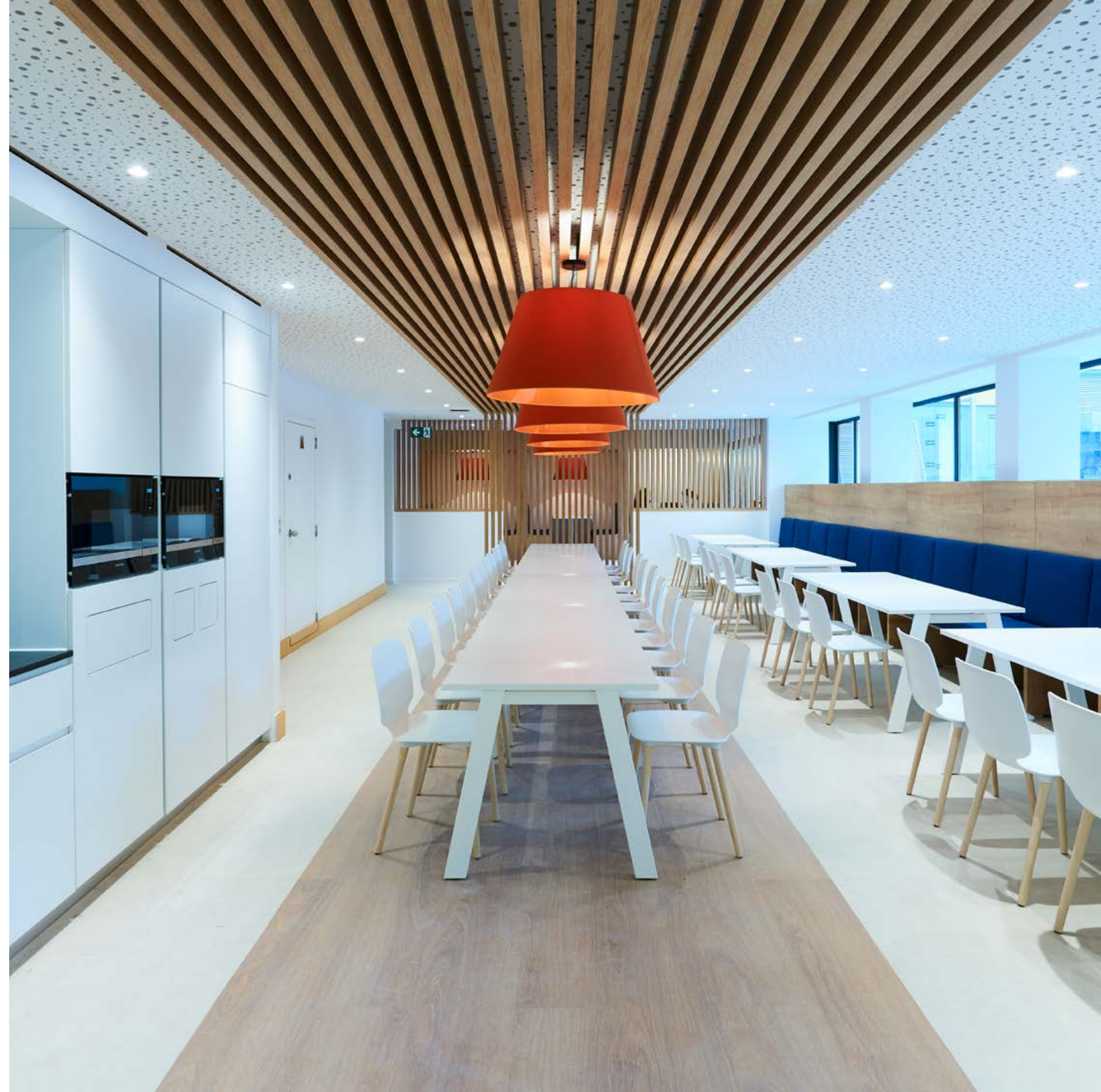
With sample and furniture moodboards, we frame and guide your selection of color palettes, furniture, finishes, and materials. We refine design intentions to match your aesthetics, with care for your timing and budget requirements, before orders and installation plans are launched.





EXPERIENCE YOUR FUTURE SPACE

Enjoy an immersive experience into your future spaces ! We are equipped with the latest technologies in Building Information Modelling, allowing you to virtually visualize your new spaces and design more easily – in 3D and in motion – at important project milestones.



OUR PROJECTS

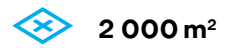
Whether you call it New World of Work, Smart Working or other... We place user-experience at the forefront of the spaces we create.

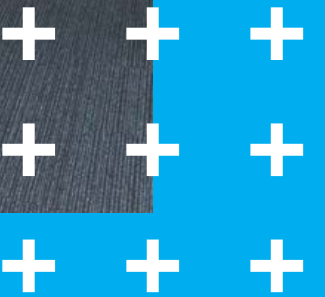
We listen to you first. Then we challenge you. To better inspire you. And create, with you, durable and unique spaces.

BEAUTY SHOULDN'T
BE EXPENSIVE.
FUNCTIONALITY
SHOULDN'T BE BORING.

Louis De Waele

A dual challenge to harmoniously convert an iconic, classified building (1968, Architect: Brodski) and a traditional organisation into contemporary spaces and ways of working.










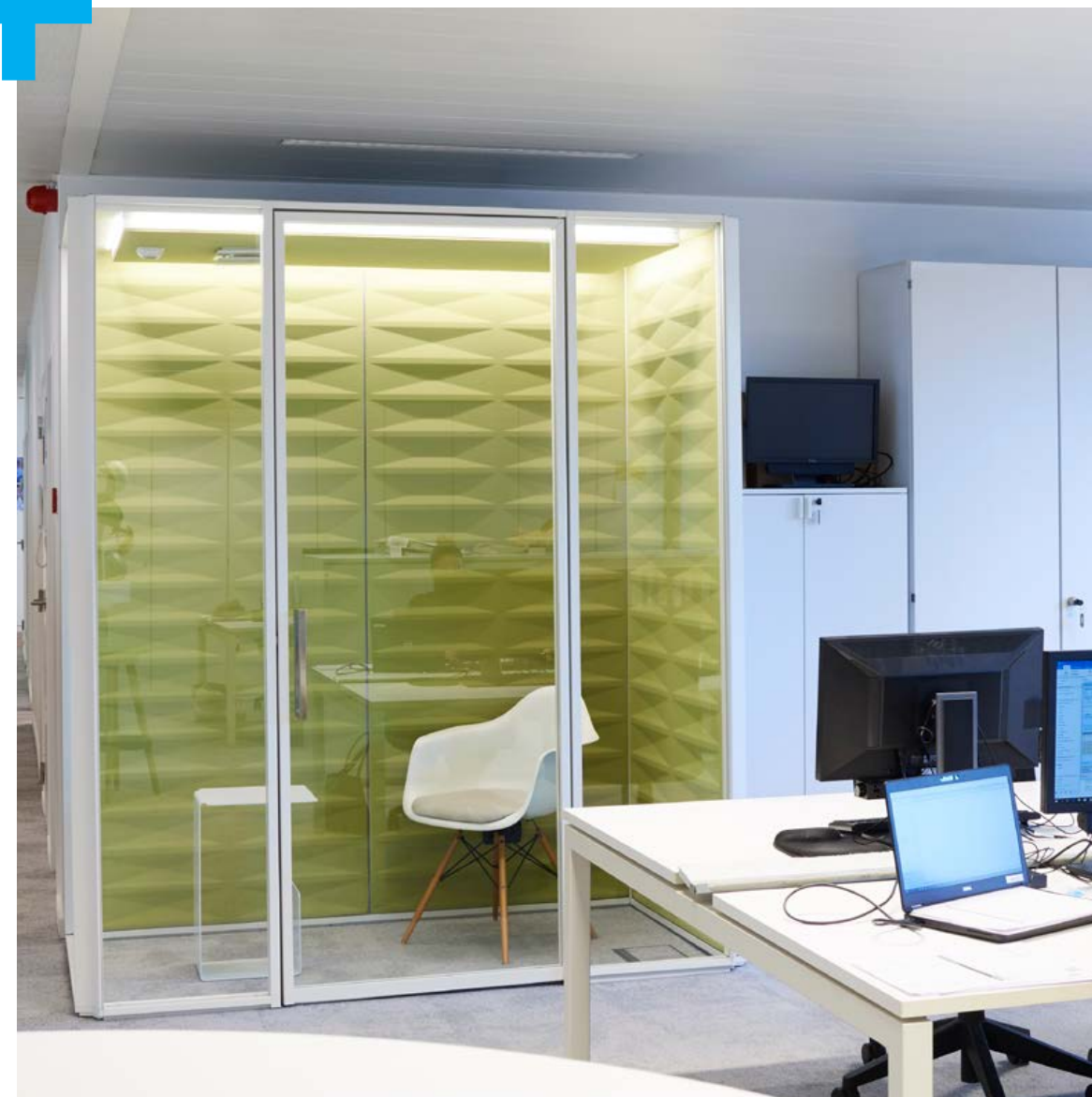
Bouygues Immobilier

 Brussels

 800 m²







Belliard 14

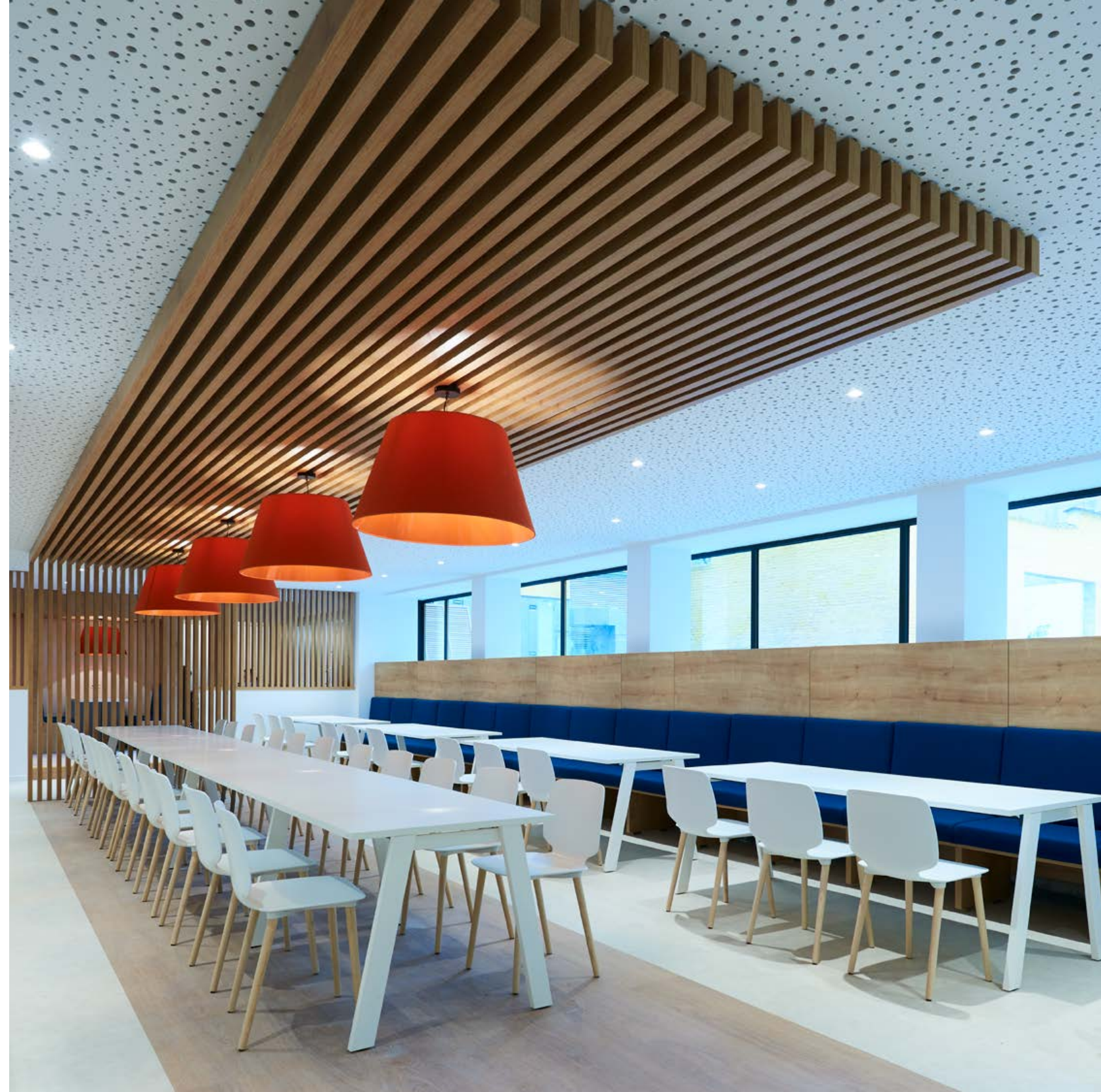
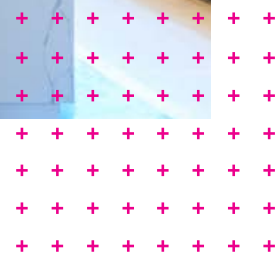
We are proud of the full redesign and fit-out executed in just 4 months, of the 6000m² space in this iconic building located on the busy rue Belliard in Brussels, including its green façade and technical installations.

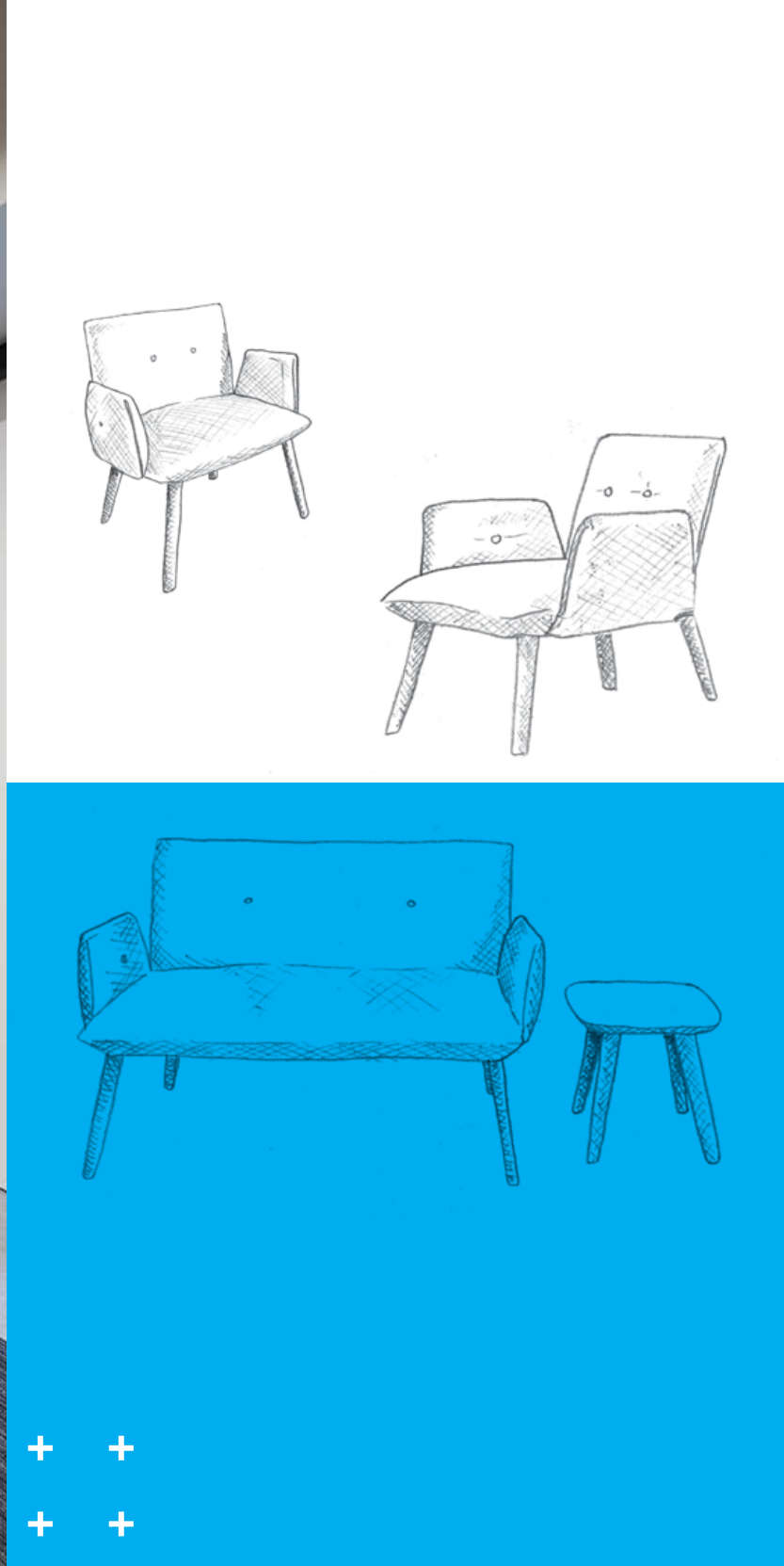


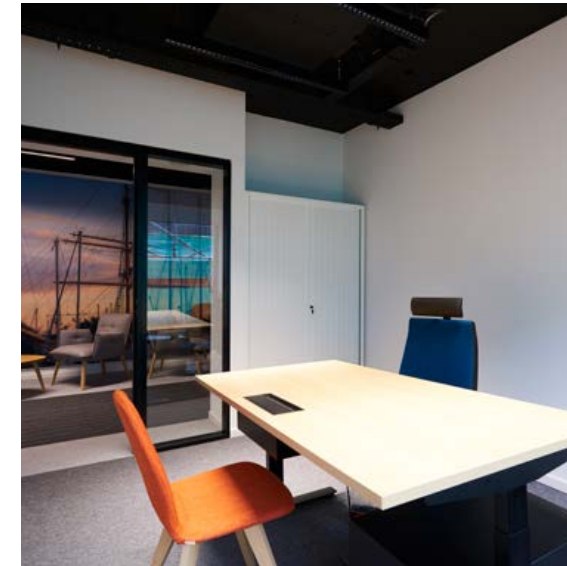
Brussels



6 000 m²







Synteract

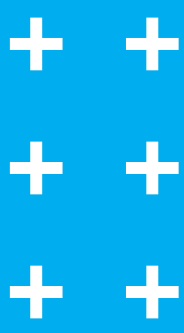


Groot Bijgaarden



560 m²



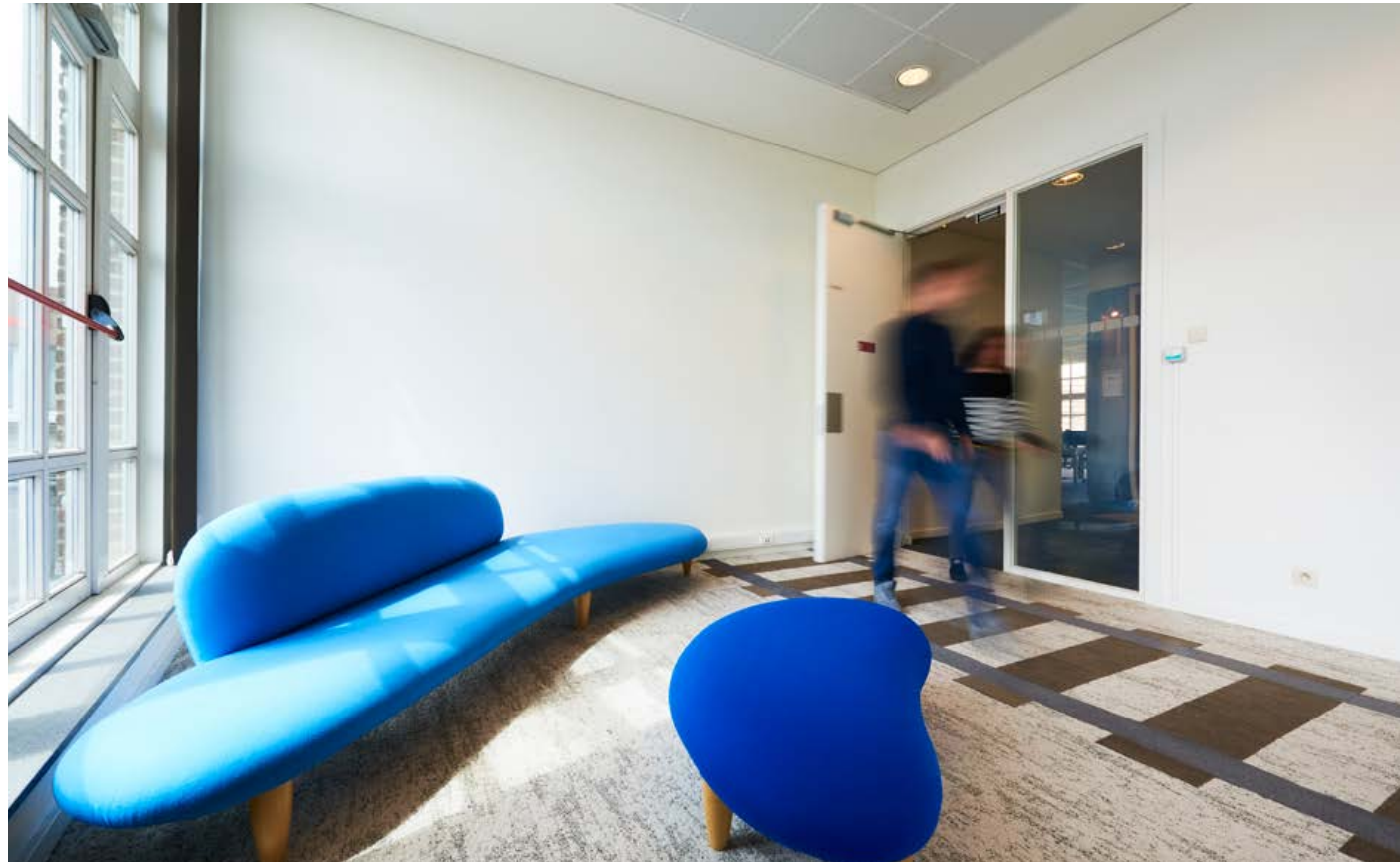


Infrabel

Fully redesign and execute works on 12 000m² of space, and ensure occupants are able to maintain business as usual throughout the build? Challenge accepted... and successfully completed in just 7 months!

 Anderlecht

 12 000 m²







User-experience comes first
for the space we create



Sibelgas



Vilvoorde



400 m²





We owe each project our best ideas, our best advice and our best execution.





Polybius

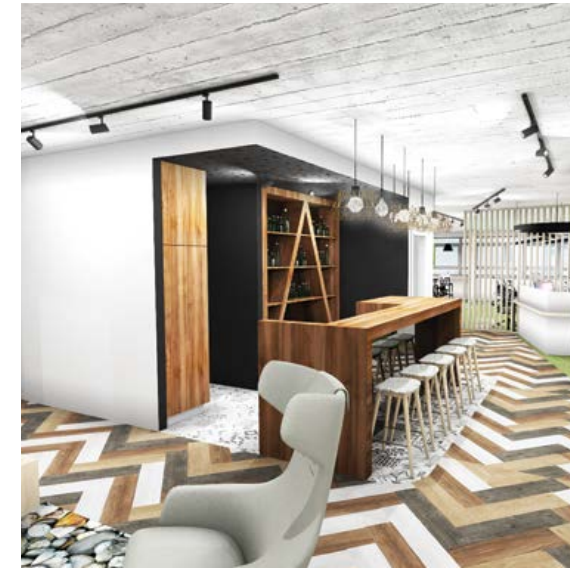
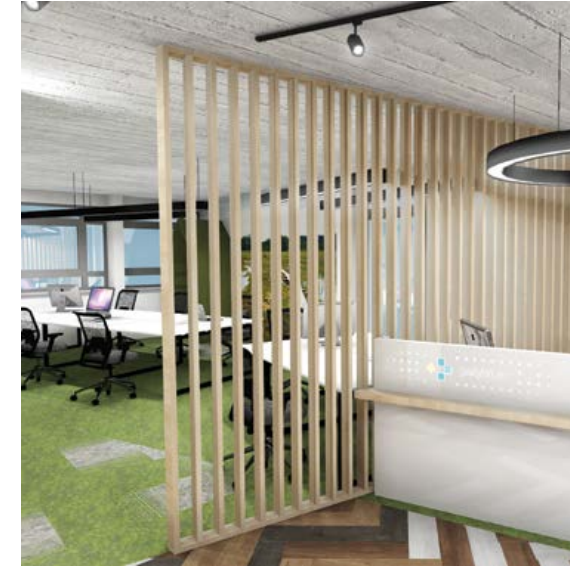


Brussels



400 m²





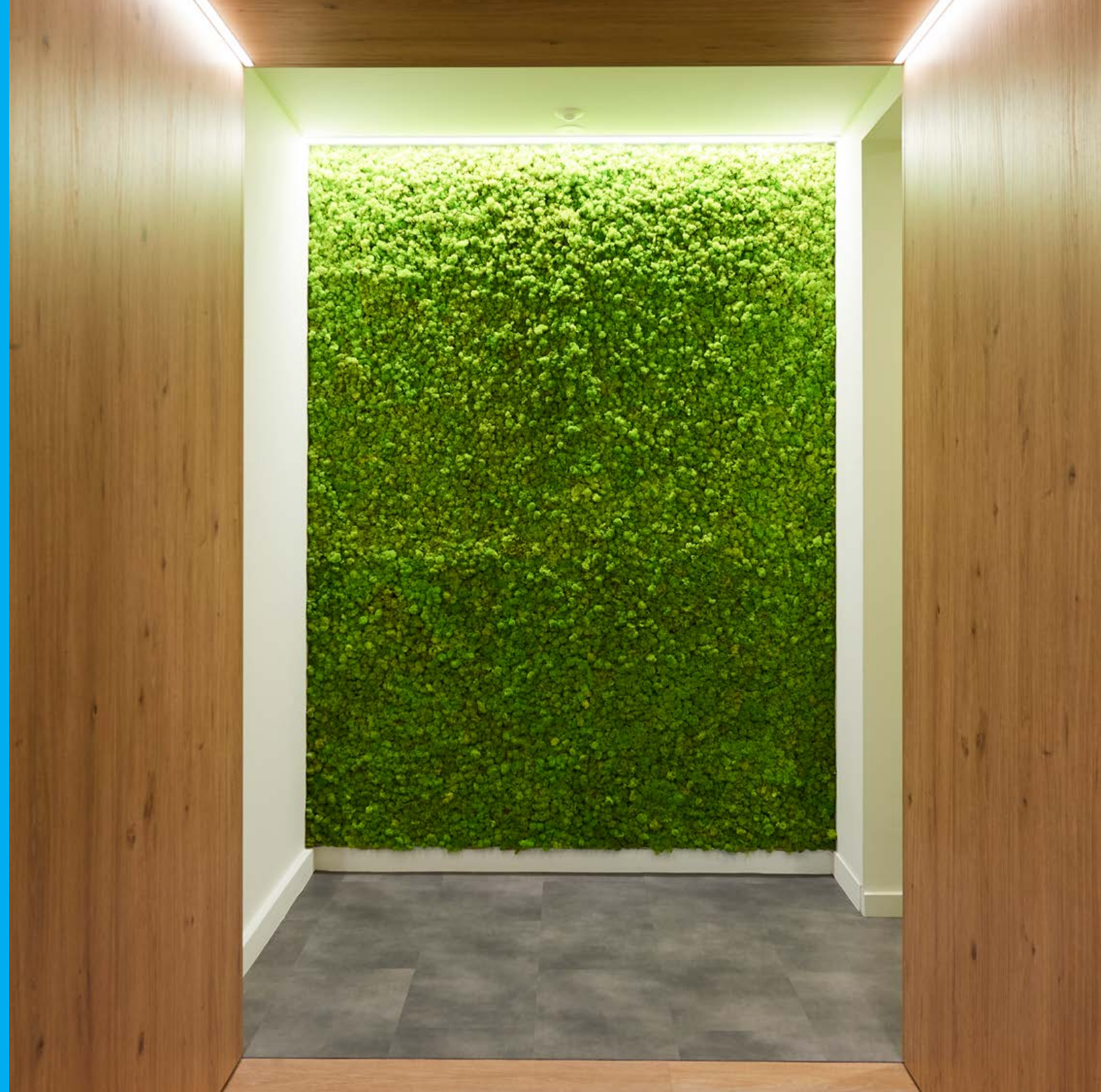
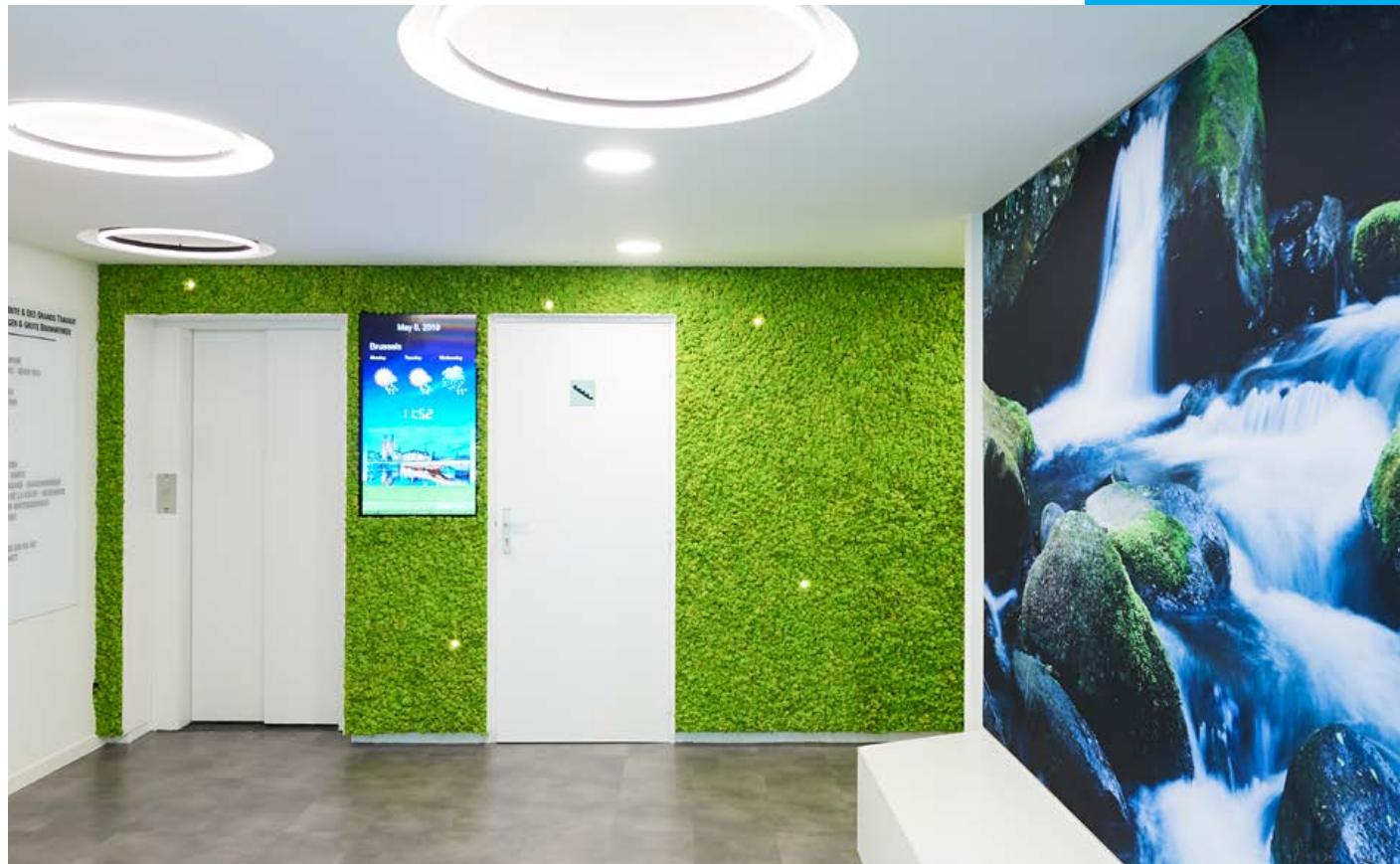
Adeb

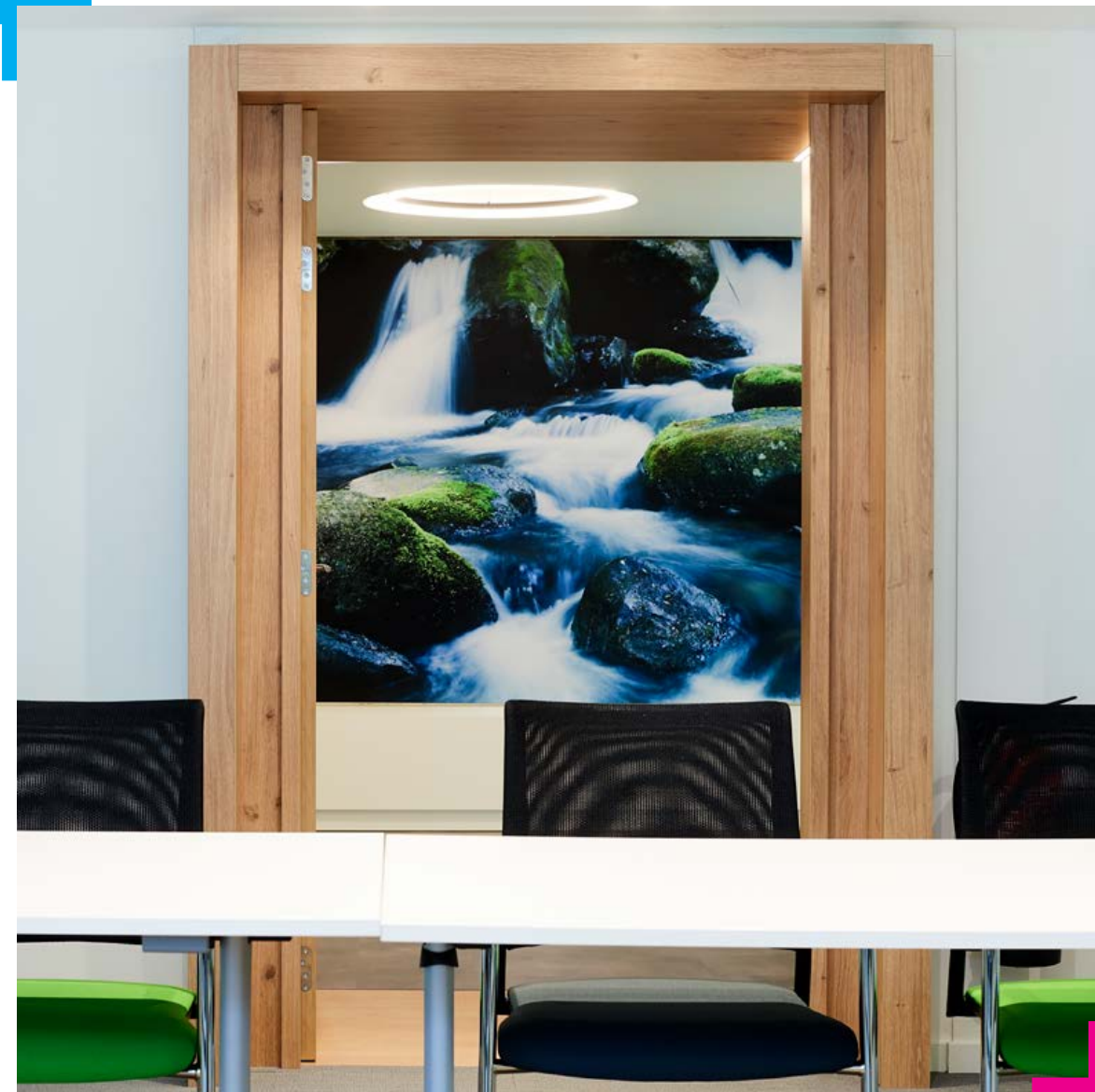


Brussels



300 m²





The Hub Plaza

By completing the full relooking of the interior design for this 12 000m² space, we enabled occupancy rate to jump from 10% to 90% in only 2 months. When we say that we design beautiful spaces, that work, we mean it.



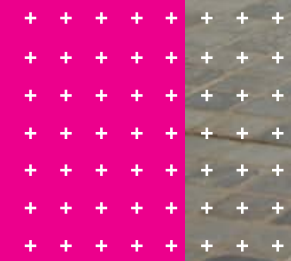
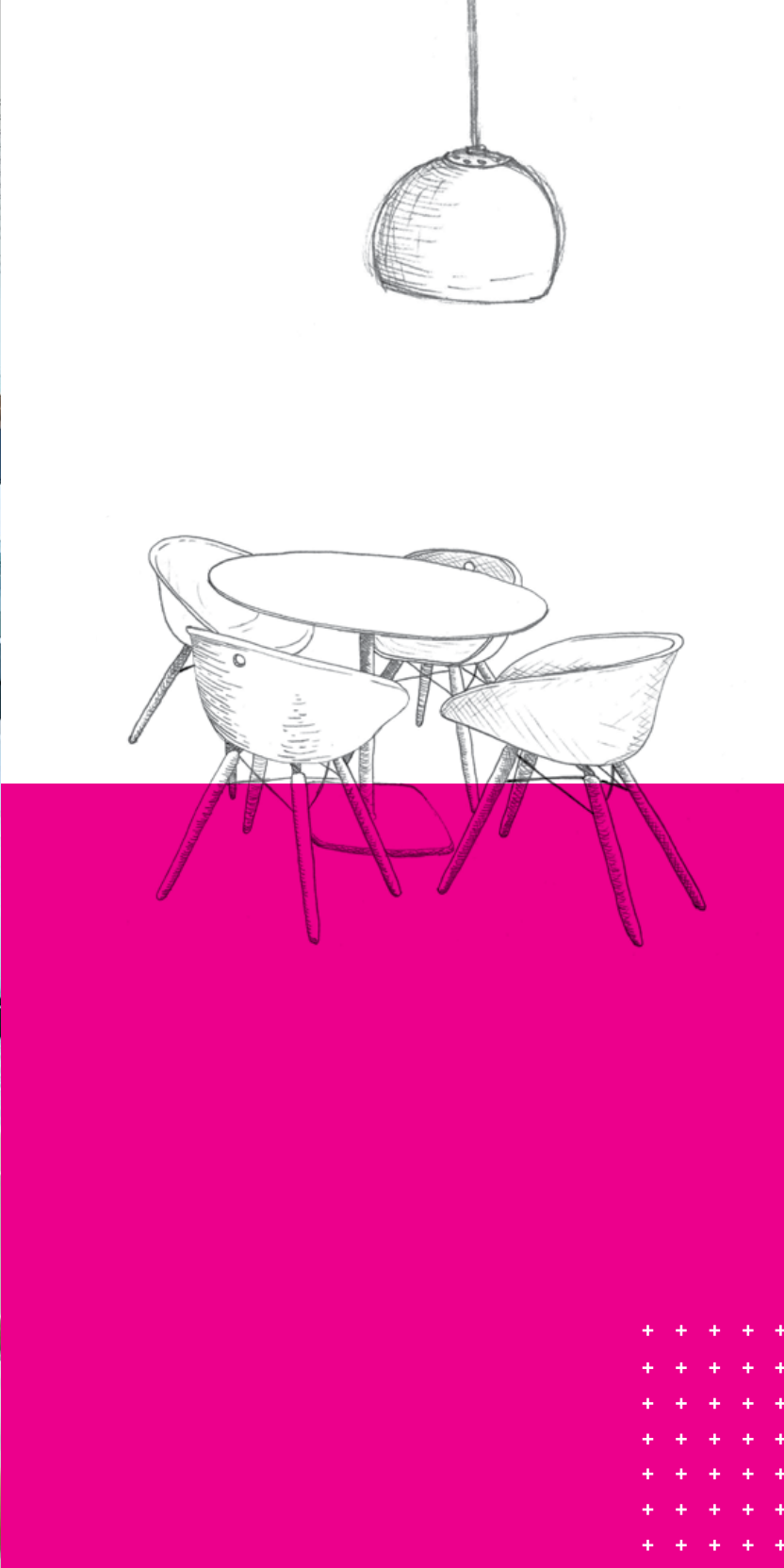
Diegem



12 000 m²







Ebury

 Brussels

 500 m²









A design concept that reflects Ebury's young and dynamic staff, providing a thoughtful combination of "work hard-play hard" workspaces.

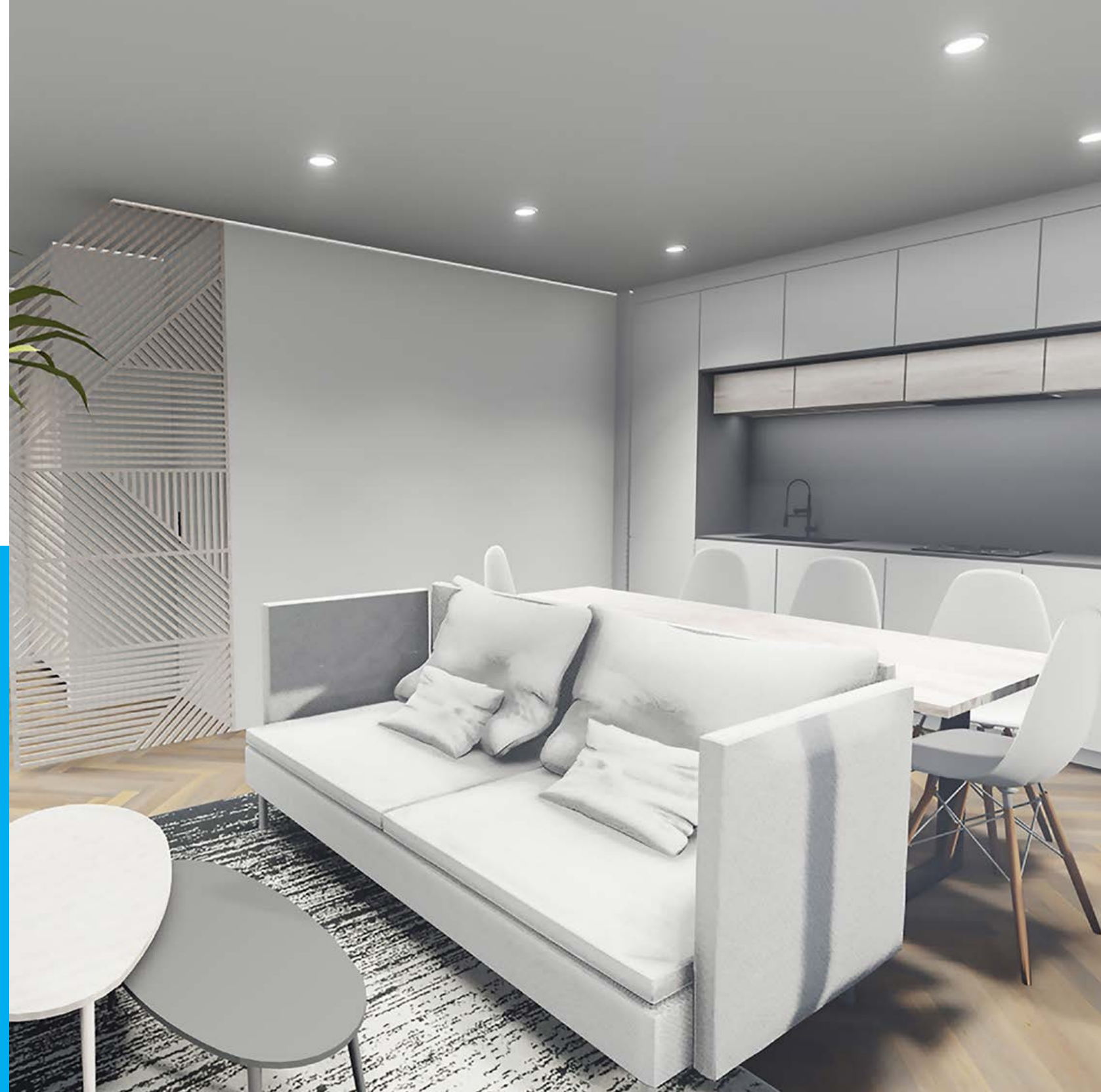
Residential project

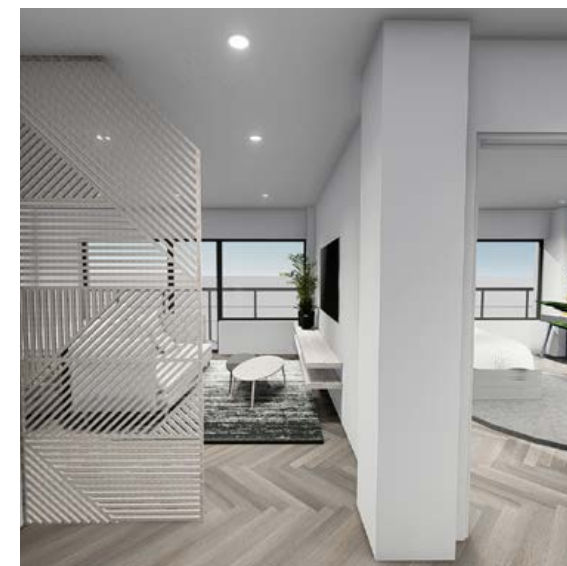
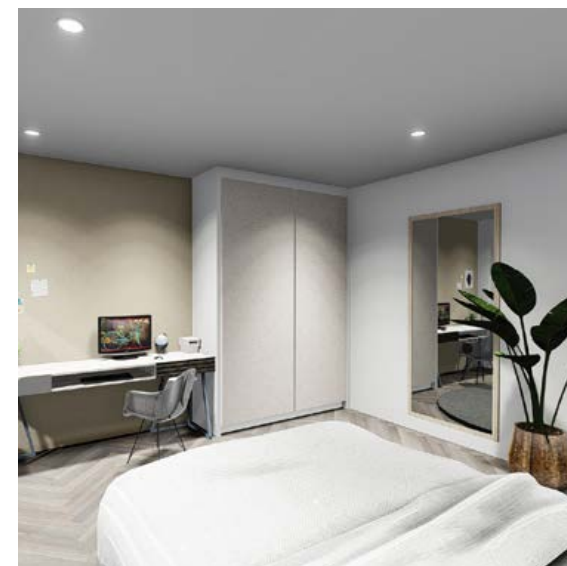
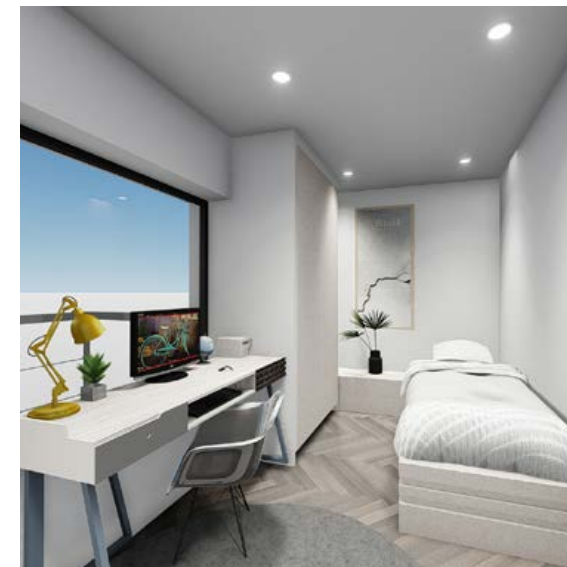
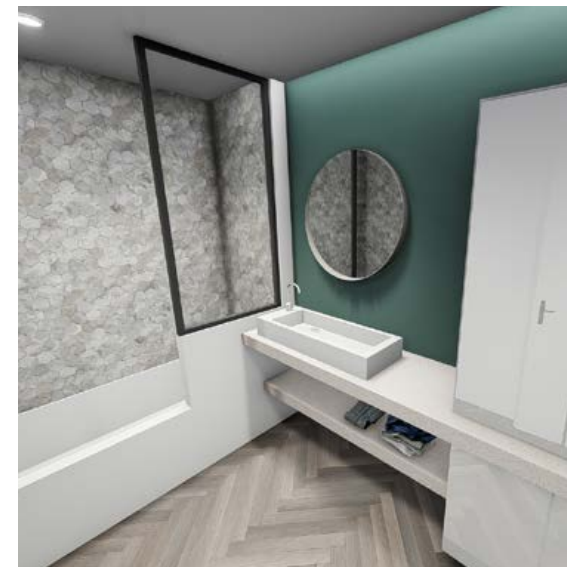


Brussels



12 apartments



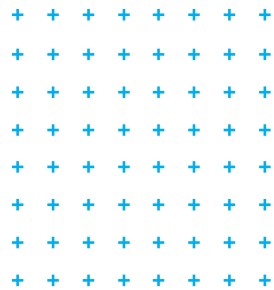


A&C SYSTEMS

📍 Hoegaarden

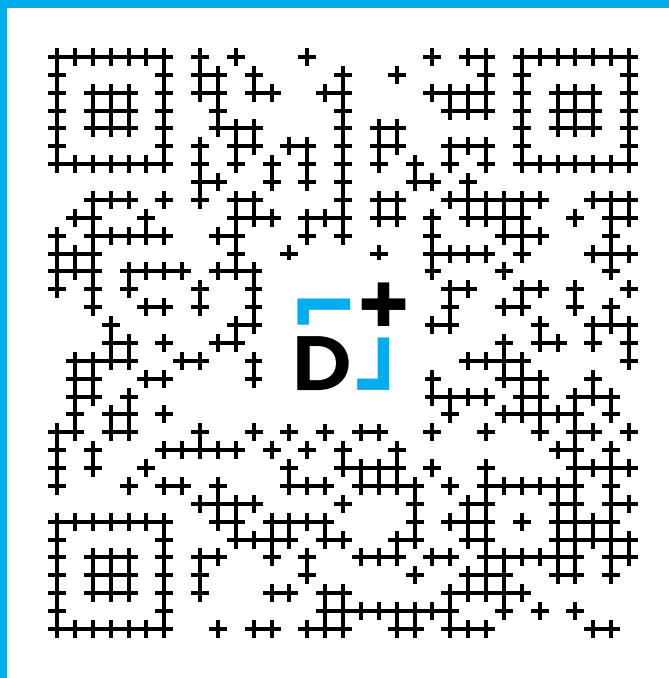
📐 1600 m²





OUR CLIENTS





Design Plus

Bd. du Souverain 125
1160 Bruxelles

+32 (0)2 899 84 84
info@design-plus.be
www.design-plus.be